

THE CRANLEIGH

4 BED, 2 BATH TOWNHOUSE

A stunning 4 bed townhouse, with private garden, parking and a high quality contemporary finish

- 4 double bedrooms
 - Spacious kitchen/dining/living area
 - 2 family bathrooms
 - Garden
 - Garage
 - Downstairs cloak room
 - French doors on to garden
- 130 sq m
1395 sq ft
- Type G**

Brand new professionally managed rental apartments and townhouses

Located near Faygate, Crawley

All enquiries



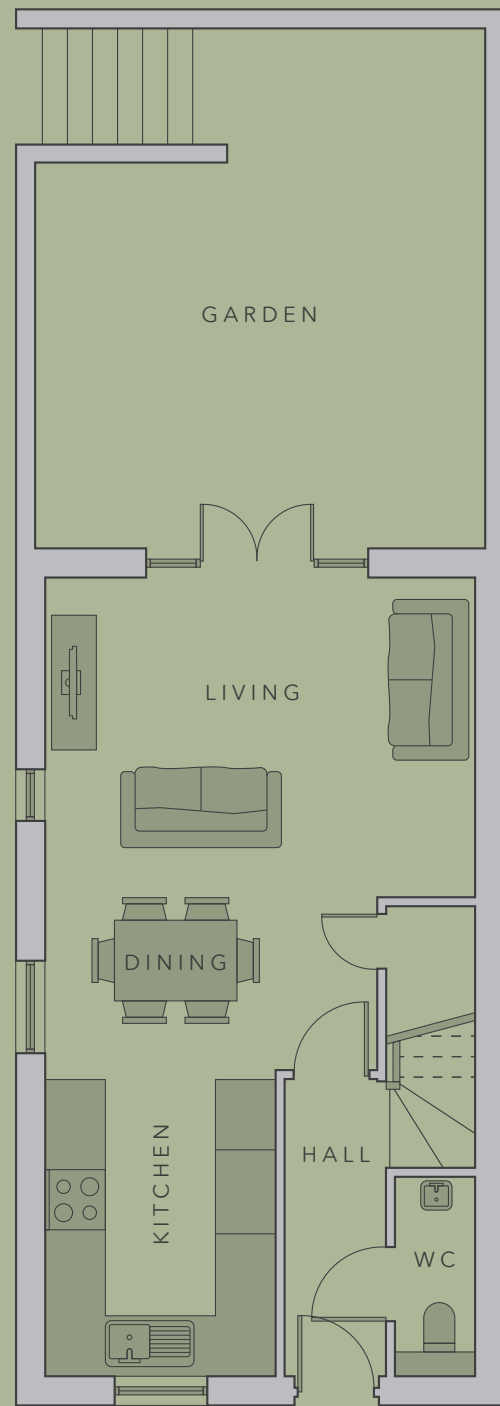
Call 0333 210 0043
thegreenkilnwoodvale.com

*The*GREEN

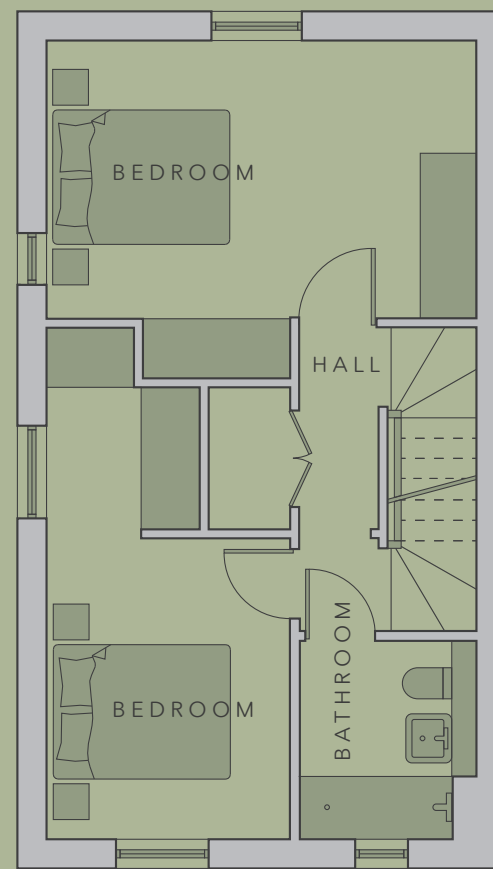
at KILNWOOD VALE

**4 bedroom,
2 bath townhouse**
Floor plans

GROUND FLOOR



FIRST FLOOR



SECOND FLOOR

