

*The*GREEN

at KILNWOOD VALE

3 bedroom, 2 bath apartment Floor plan

Brand new professionally
managed rental apartments
and townhouses

Located in Faygate, near Crawley

All enquiries



Call 0333 210 0043
thegreenkilnwoodvale.com

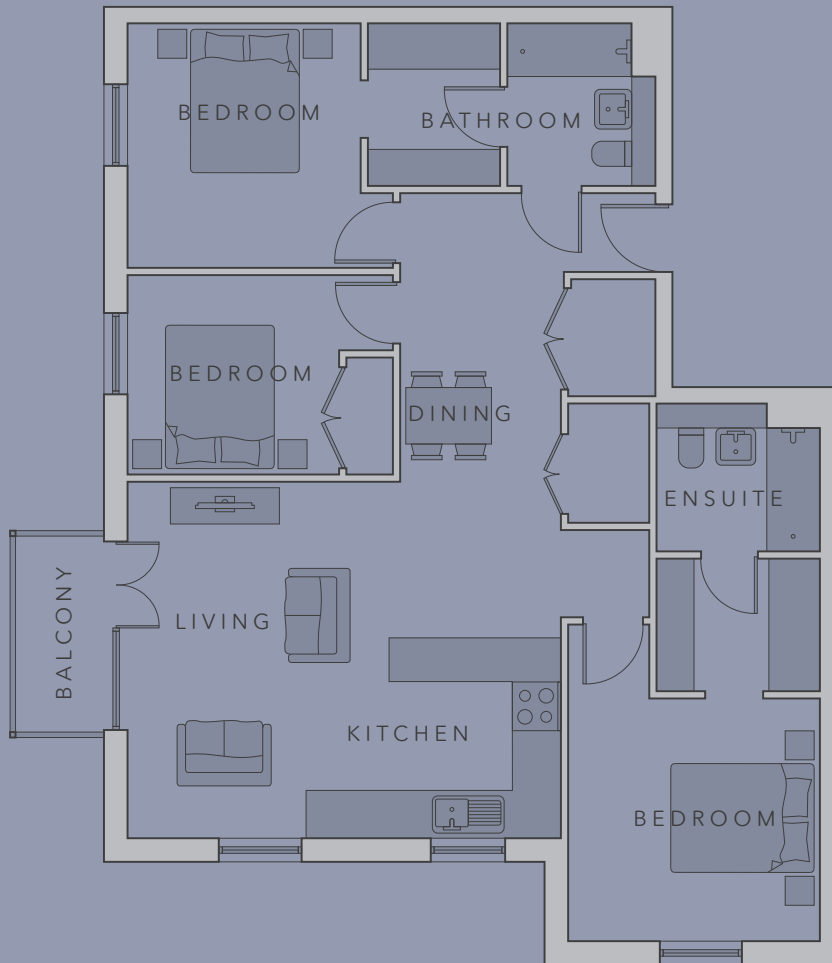
THE SUTTON AT THE COURTYARD

3 BED, 2 BATH APARTMENT

- 3 double bedrooms
- Spacious open plan kitchen/living area
- Family bathroom
- Ensuite
- Balcony

98 sq m
1054 sq ft

Type CC



Floor plans are of a typical unit and vary in shape and size
Blocks E, F, G, H