

*The*GREEN

at KILNWOOD VALE

2 bedroom, 2 bath apartment Floor plan

Brand new professionally
managed rental apartments
and townhouses

Located in Faygate, near Crawley

All enquiries



Call 0333 210 0043
thegreenkilnwoodvale.com

THE HOLMBURY AT THE COURTYARD

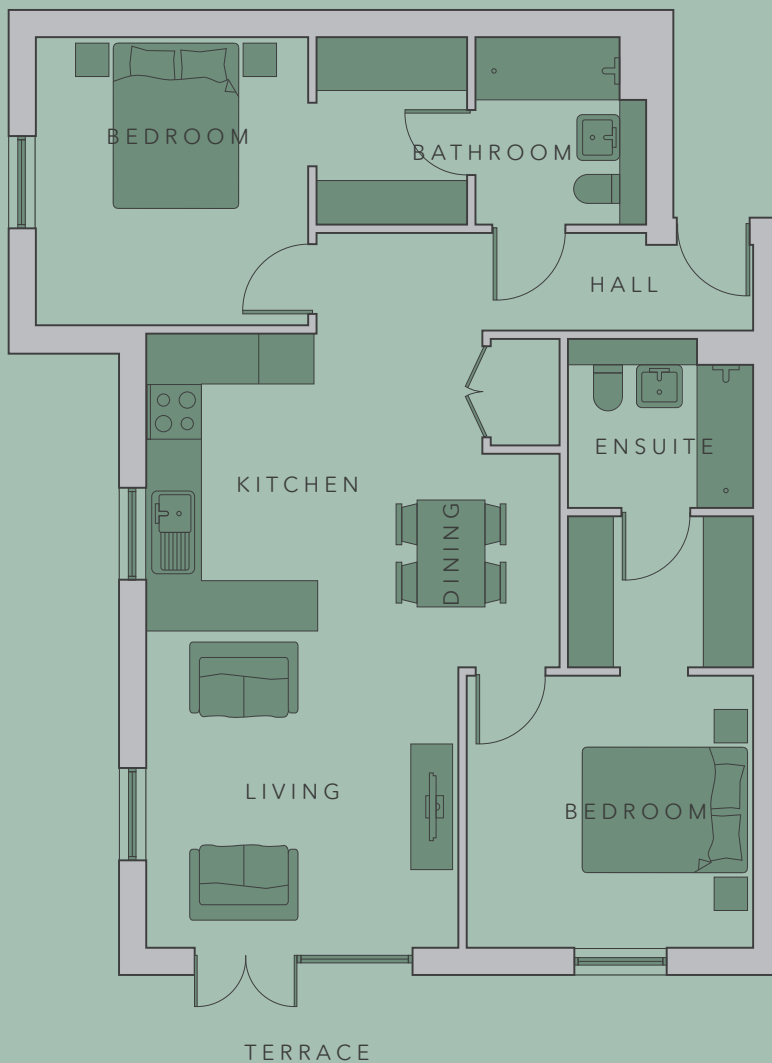
2 BED, 2 BATH APARTMENT

- 2 equally sized double bedrooms
- Spacious open plan kitchen/living/dining area
- 2 Bathrooms
- 2 Dressing rooms
- Balcony or terrace
- Ground and first floors

79 sq m

849 sq ft

Type HH



Floor plans are of a typical unit and vary in shape and size
Blocks G & H