

*The*GREEN

at KILNWOOD VALE

3 bedroom, 2 bath apartment Floor plan

Brand new professionally
managed rental apartments
and townhouses

Located in Faygate, near Crawley

All enquiries



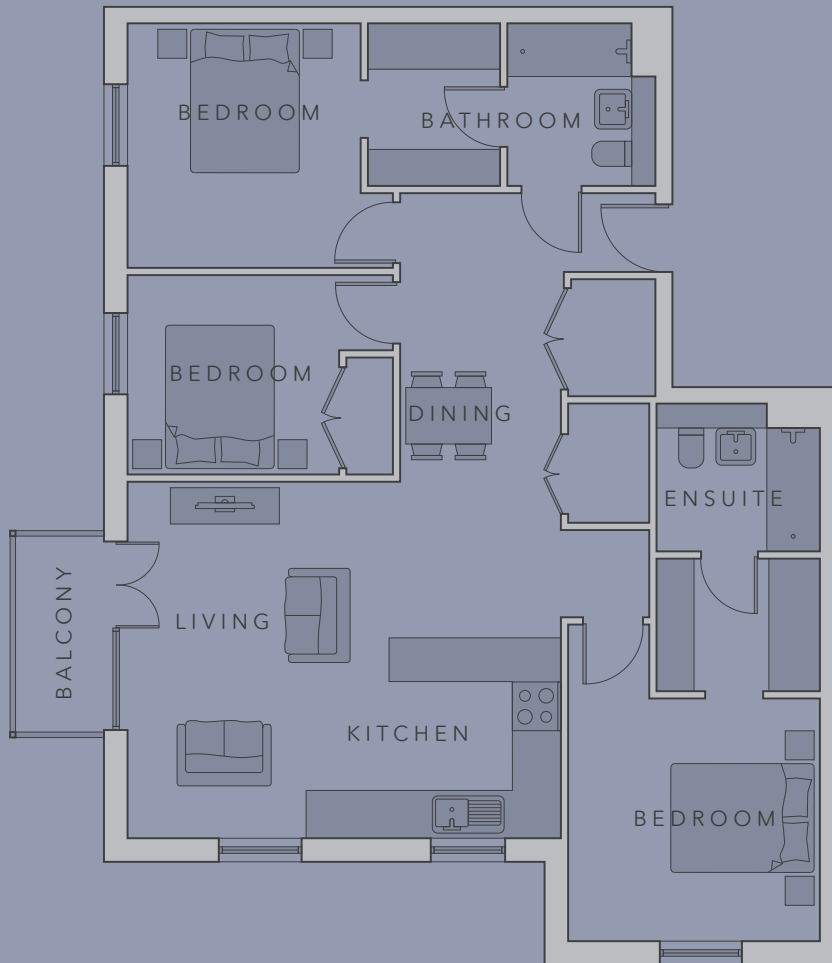
Call 0333 210 0043
thegreenkilnwoodvale.com

THE SUTTON AT THE COURTYARD

3 BED, 2 BATH APARTMENT

Starting from £1,600 pcm

- 3 double bedrooms
 - Spacious open plan kitchen/living area
 - Family bathroom
 - Ensuite
 - Balcony
- 98 sq m
1054 sq ft
- Type CC**



Floor plans are of a typical unit and vary in shape and size
Blocks E, F, G, H