

THE WEALD

3 BED, 2 BATH TOWNHOUSE

Starting from £1,700 pcm

A stunning 3 bed townhouse, with private garden, parking and a high quality contemporary finish

- 3 double bedrooms
 - Spacious kitchen/dining/living area
 - 1 family bathroom
 - 1 ensuite bathroom
 - Garden
 - Garage
- 106 sq m
1141 sq ft
- Type H**

Brand new professionally managed rental apartments and townhouses

Located near Faygate, Crawley

All enquiries



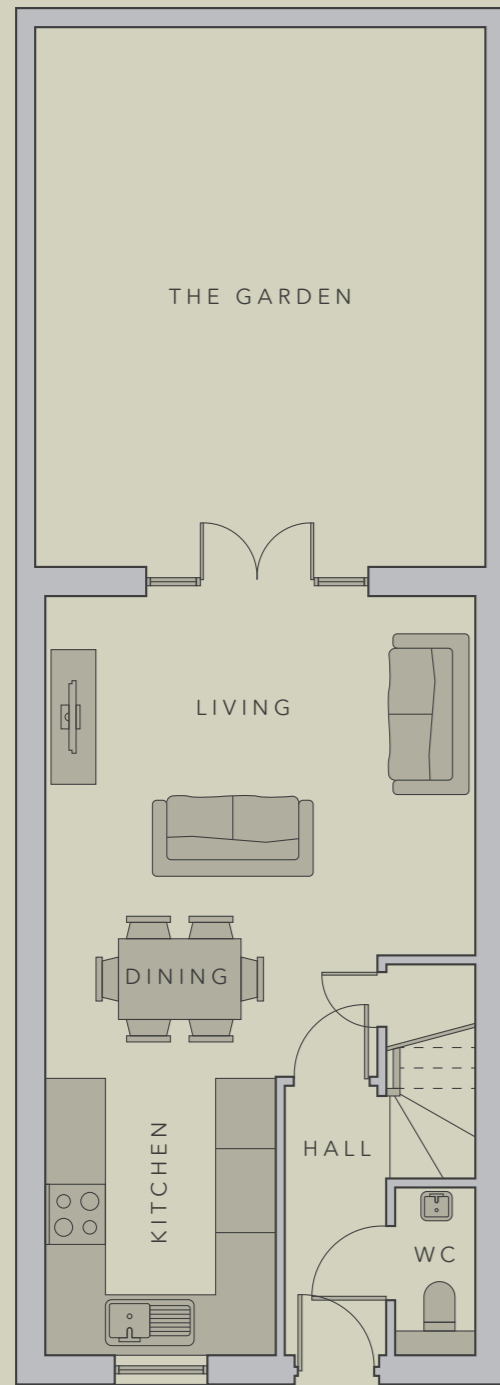
Call 0333 210 0043
thegreenkilnwoodvale.com

TheGREEN

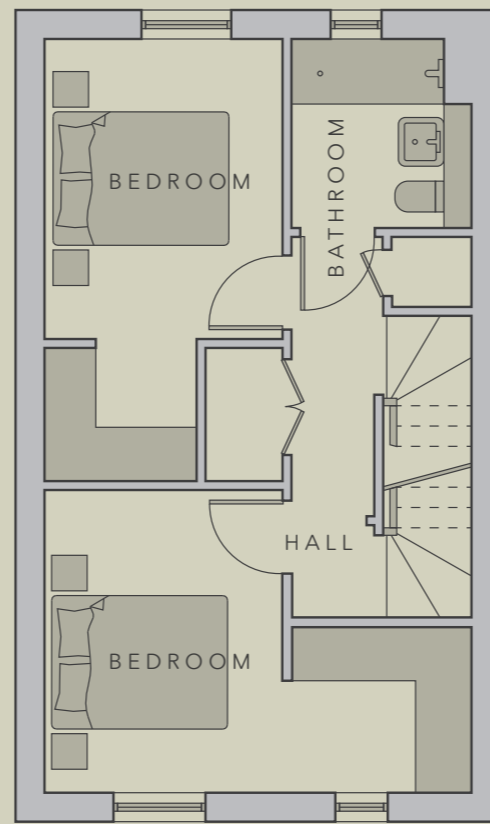
at KILNWOOD VALE

**3 bedroom,
2 bath townhouse**
Floor plans

GROUND FLOOR



FIRST FLOOR



SECOND FLOOR

