

THE CRANLEIGH

# 4 BED, 2 BATH TOWNHOUSE

Starting from £1,900 pcm

A stunning 4 bed townhouse, with private garden, parking and a high quality contemporary finish

- 4 double bedrooms
  - Spacious kitchen/dining/living area
  - 2 family bathrooms
  - Garden
  - Garage
  - Downstairs cloak room
  - French doors on to garden
- 130 sq m  
1395 sq ft
- Type G**

Brand new professionally managed rental apartments and townhouses

Located near Faygate, Crawley

All enquiries



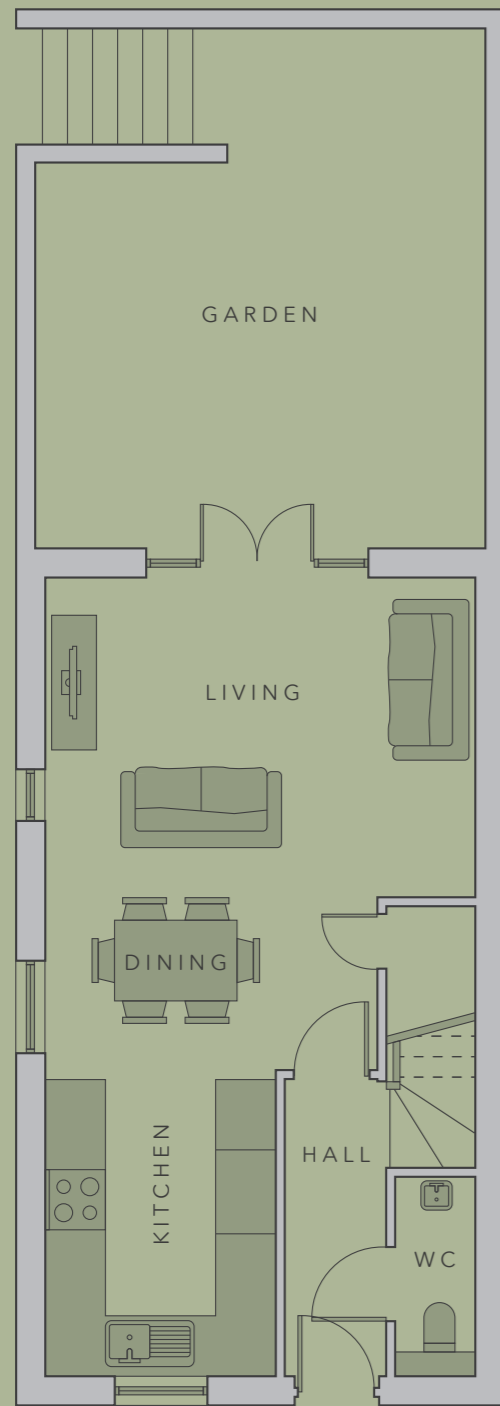
Call 0333 210 0043  
[thegreenkilnwoodvale.com](http://thegreenkilnwoodvale.com)

*The***GREEN**

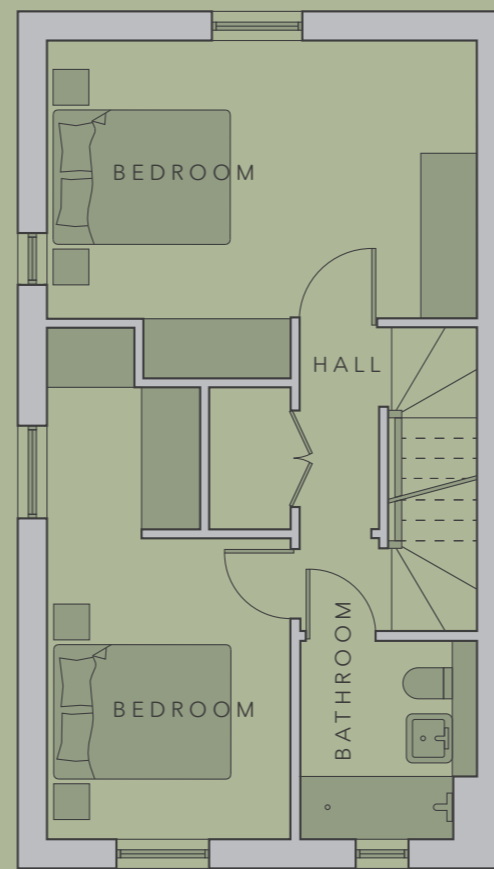
at KILNWOOD VALE

**4 bedroom,  
2 bath townhouse**  
Floor plans

# GROUND FLOOR



# FIRST FLOOR



# SECOND FLOOR

